

Northeast Orlando Warehouse & Office

1810 Alden Rd. Orlando, FL 32803

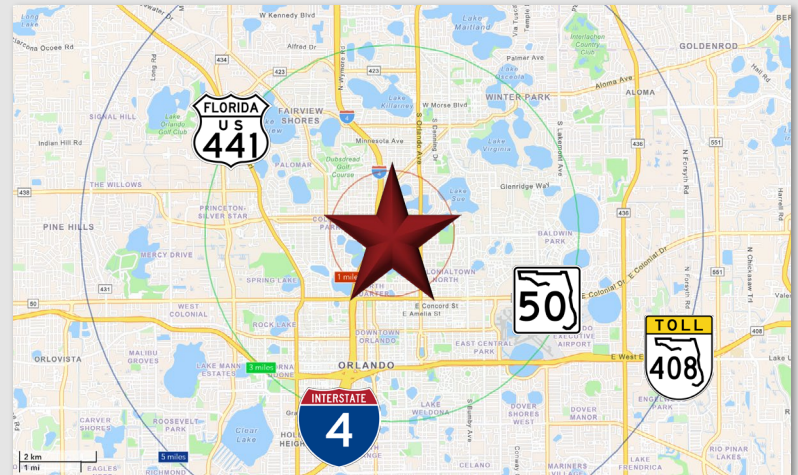
Palkiper
Commercial Real Estate Services
Licensed Real Estate Broker



FOR LEASE: \$15 MG

LOCATION HIGHLIGHTS

Located in the northeast corner of Orlando less than half a mile from the I-4 on-ramps at Princeton St and Ivanhoe Blvd, with quick access to Downtown Orlando and the surrounding areas. Nearby amenities include Loch Haven Park, Ivanhoe Village Main Street, and Mills 50, offering a wide range of cultural, dining, and entertainment options.



LISTING HIGHLIGHTS

- **15,672± SF total** - Office and warehouse available
- **6,687± SF warehouse** featuring **3 roll-up doors**: two with a covered truck well and one with a ramp leading to the adjacent paved lot
- **Large office space** includes 3 large work areas, 4 private offices, a reception area, and a mail sorting area
- **2-year lease term**

2026 DEMOGRAPHICS	1-MILE	3-MILE	5-MILE
Population	12,237	101,588	285,337
Median HH Income	\$110,916	\$102,185	\$81,992
Average HH Income	\$156,843	\$152,248	\$125,479

CONTACT FOR MORE INFORMATION

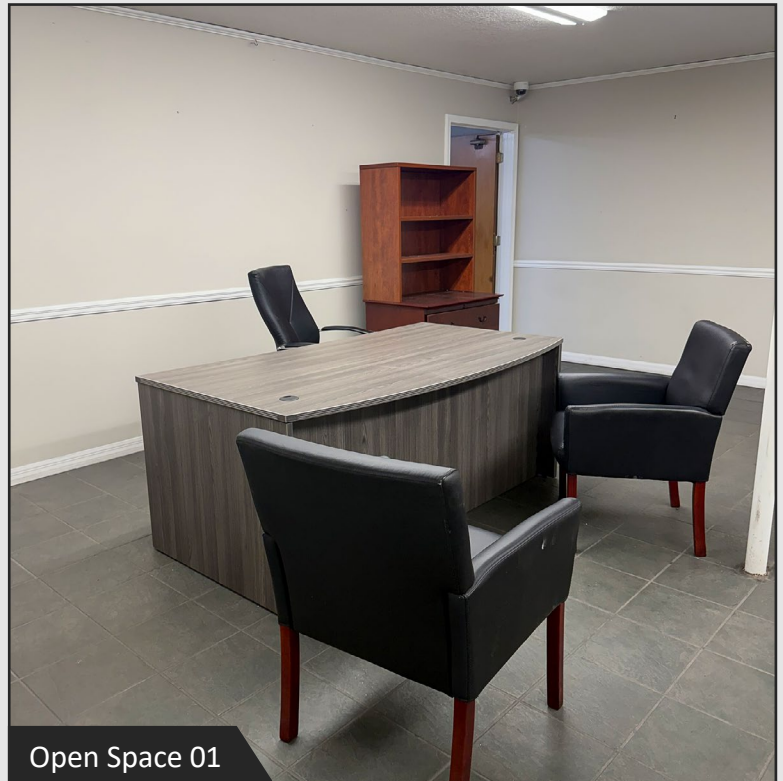
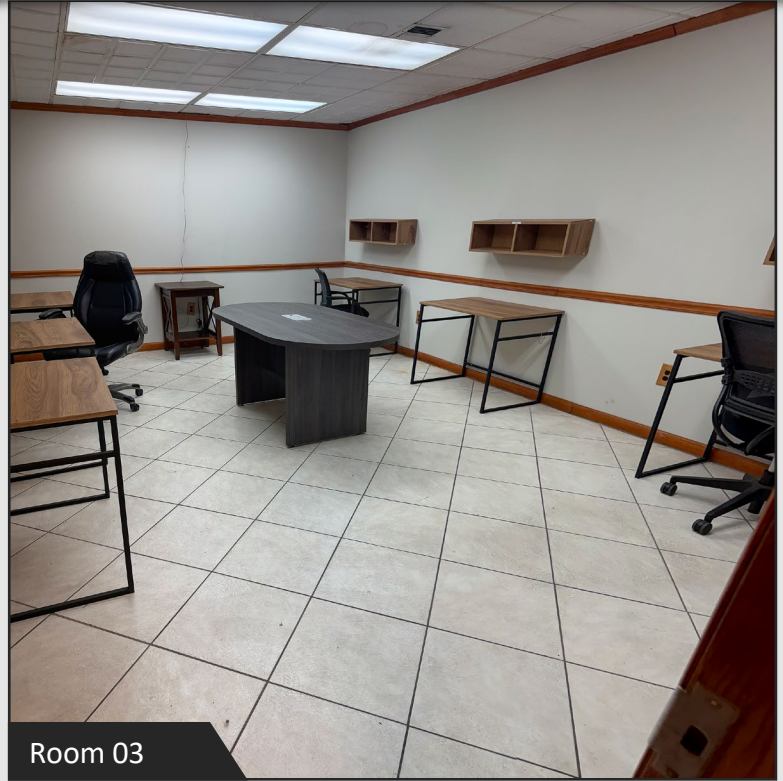
Marie Shorey, CCIM

(407) 383-8142

Marie@palkiper.com

Northeast Orlando Warehouse & Office

1810 Alden Rd. Orlando, FL 32803



CONTACT FOR MORE INFORMATION

Marie Shorey, CCIM

(407) 383-8142

Marie@palkiper.com

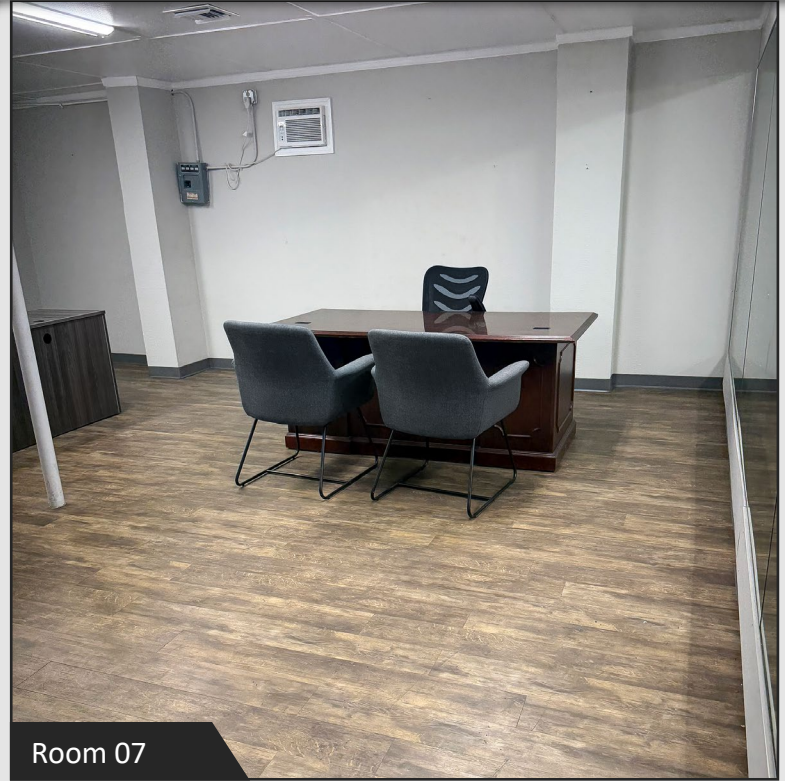
Northeast Orlando Warehouse & Office

1810 Alden Rd. Orlando, FL 32803

 **Palkiper**
Commercial Real Estate Services
Licensed Real Estate Broker



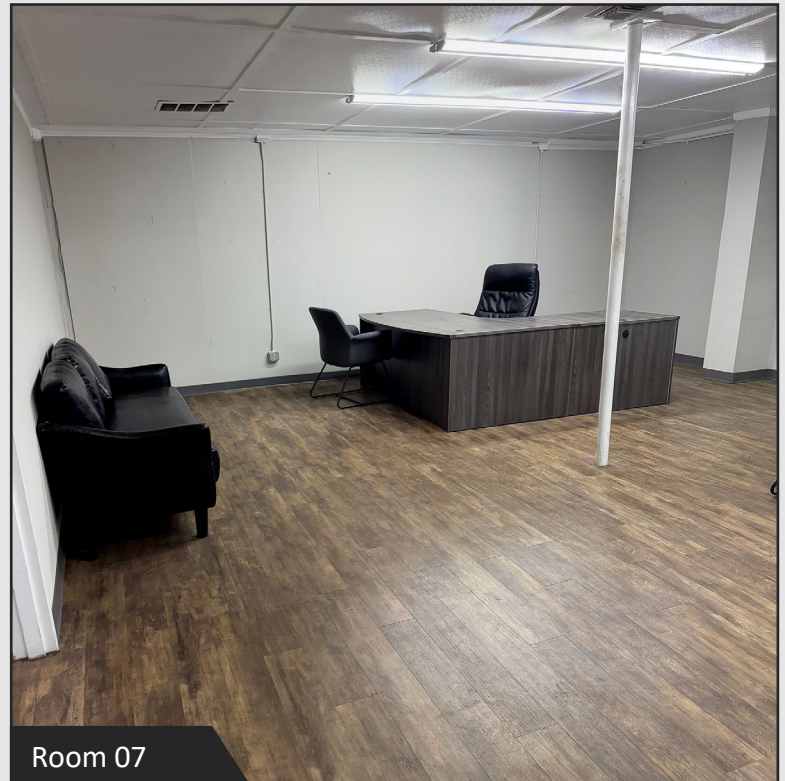
Room 04



Room 07



Room 06



Room 07

CONTACT FOR MORE INFORMATION

Marie Shorey, CCIM

(407) 383-8142

Marie@palkiper.com

Northeast Orlando Warehouse & Office

1810 Alden Rd. Orlando, FL 32803



Ramp to Yard



Door to Office



Stairs to Mezzanine Storage

CONTACT FOR MORE INFORMATION

Marie Shorey, CCIM

(407) 383-8142

Marie@palkiper.com

Northeast Orlando Warehouse & Office

1810 Alden Rd. Orlando, FL 32803

 **Palkiper**
Commercial Real Estate Services
Licensed Real Estate Broker



CONTACT FOR MORE INFORMATION

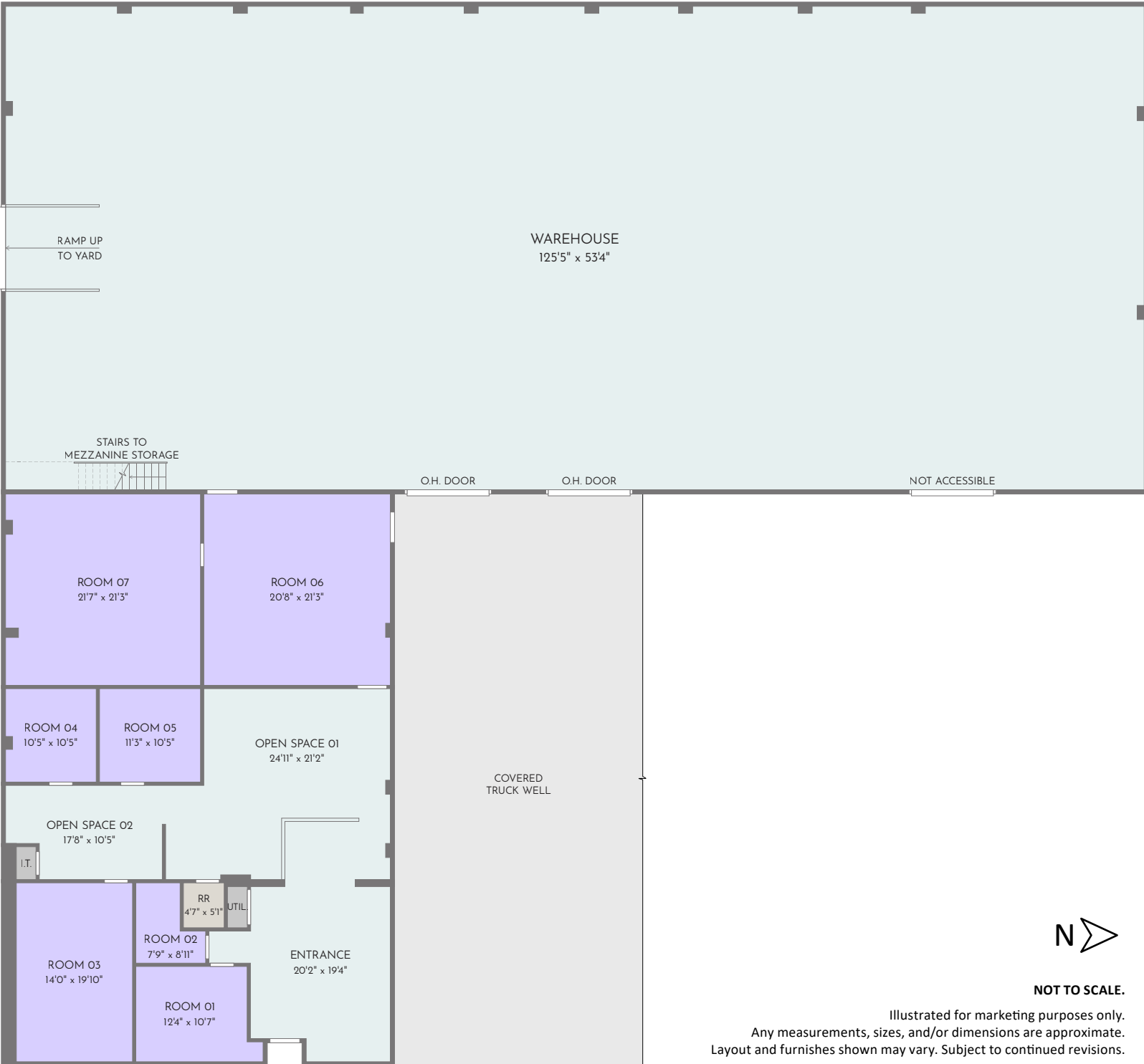
Marie Shorey, CCIM

(407) 383-8142

Marie@palkiper.com

Northeast Orlando Warehouse & Office

1810 Alden Rd. Orlando, FL 32803



CONTACT FOR MORE INFORMATION

Marie Shorey, CCIM

(407) 383-8142

Marie@palkiper.com